

Infectious Agent

- Basic microbiology
- [Diseases and Conditions Table \(Acute Care\)](#)
- [Diseases and Conditions Table \(Continuing Care\)](#)

Reservoir

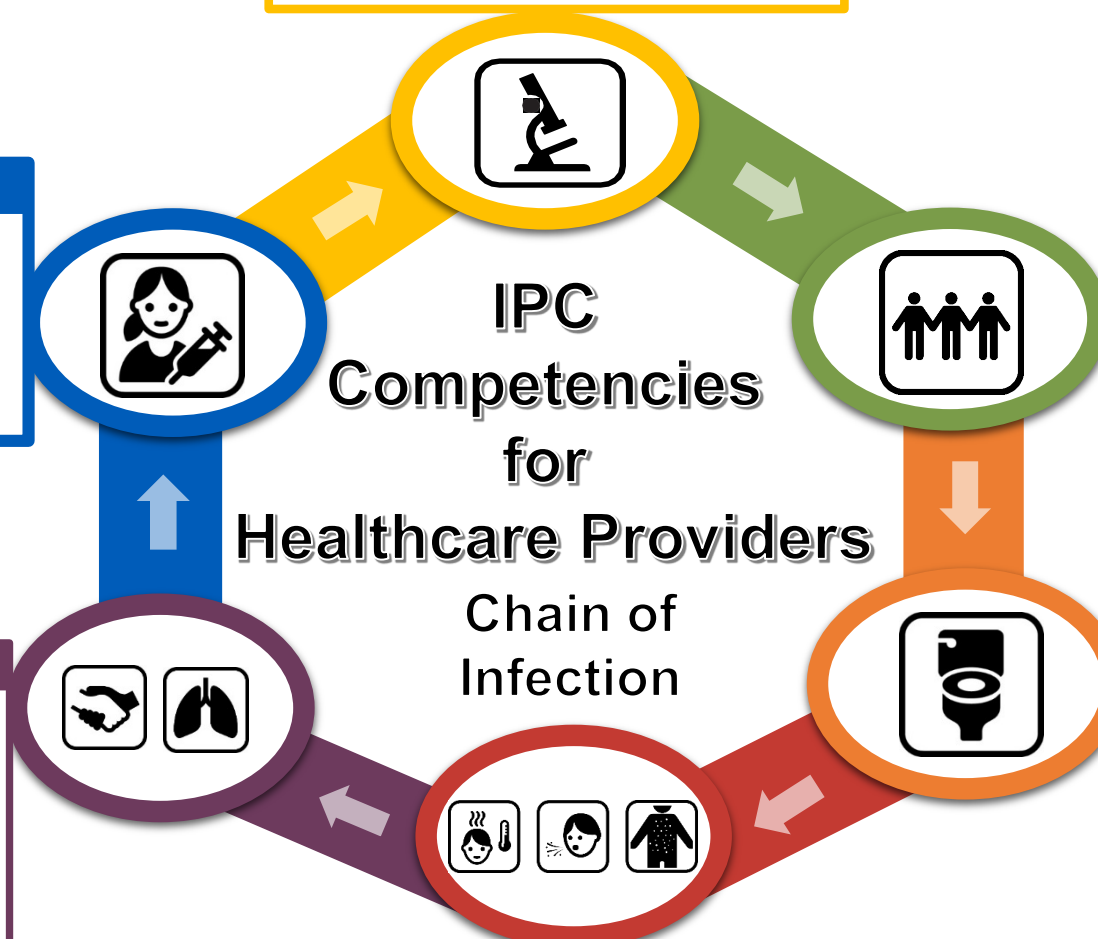
- Infected Host
- [Medical devices](#) & [patient care equipment](#)
- Construction
- Waste management
- Food, water and non-humans
- [Surveillance](#)

Portal of Exit

- Source control
- [PCRA](#)
- [Respiratory Etiquette](#)
- [Human waste management](#)

Modes of Transmission

- [Routine practices](#)
- [Additional precautions](#)
- [Personal Protective Equipment](#)
- [Hand Hygiene](#)
- Patient placement
- Healthcare facility design



Susceptible Host

- Vaccination
- Fit to work
- Travel history
- Immune system integrity
- Organism specific risk factors
- [Surveillance](#)

Portal of Entry

- [Point of Care Risk Assessment](#)
- [Personal Protective Equipment](#)
- Blood and body fluid exposure (sharps management)
- Invasive devices

For more information contact
ipcsurvstdsadmin@ahs.ca
 Original date: October 2020